

**South Fork East: Approved Colors Schemes: CALLAWAY POND, CHALK HILL, FLORA SPRINGS,
FLADGATE MARK DR., ASHTON FIELD, GRAHAM YEARDEN DR., RIVERVIEW, FL 33579**



7839 Fruitville Road, Sarasota, FL 34240 • Toll Free: 800.282.2016 • Phone: 941.371.0015 • Fax: 941.378.0010 • www.scottpaint.com

South Fork East – III : Callaway Pond, Chalk Hill, Flora Springs, Fladgate Mark Drive, Ashton Field and
Graham Yarden Drive
c/o
Meritus
5680 W. Cypress Street, Suite A
Tampa, FL 33607
813.397.5120

This color book illustrates the approved color schemes for South Fork East III: Callaway Pond, Chalk Hill, Flora Springs, Fladgate Mark Drive, Ashton Field and Graham Yarden Drive. If you desire to have your home painted the existing color and cannot determine what that color is, please contact me directly for assistance. A cash account has been created for South Fork East III HOA that offers our lowest contractor pricing to the community at any of our company stores. Please refer to the store locator for the most convenient Scott Paint location. Also, we offer free same day delivery service to South Fork East.

Scott Paint Co. is happy to recommend qualified, licensed and insured paint contractors. Please contact me directly for contractor referrals.

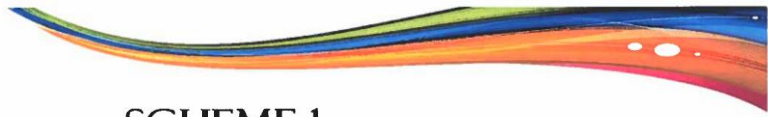
Sincerely,

Bill Taylor
Sr. Territory Manager
Scott Paint Company
813-781-3671
btaylor@scottpaint.com

SCOTT KNOWS FLORIDA • MANUFACTURING FLORIDA'S BEST PAINT SINCE 1965

Professionally Managed by FirstService Residential
2870 Scherer Dr N. #100 St. Petersburg, FL 33716 | Tel: 727-299-9555 | Fax: 727-299-9556|
Email: CFarc@fsresidential.com | www.Fsresidential.com

South Fork East: Approved Colors Schemes: CALLAWAY POND, CHALK HILL, FLORA SPRINGS,
FLADGATE MARK DR., ASHTON FIELD, GRAHAM YEARDEN DR., RIVERVIEW, FL 33579



SCHEME 1



BODY— 8551 POCAHONTAS

TRIM — WHITE

COMPUTER MONITORS AND PRINTERS EXHIBIT WIDE RANGES OF COLOR VARIABILITY. PLEASE REFER TO YOUR SPECIFIED COLOR CHIP OR VIEW A PRODUCT SAMPLE FOR AN ACCURATE REPRESENTATION OF THE ACTUAL COLOR PRIOR TO PURCHASE



SCHEME 2



BODY— 8459 POCAHONTAS

TRIM — 8456 BRISTOL BEIGE

COMPUTER MONITORS AND PRINTERS EXHIBIT WIDE RANGES OF COLOR VARIABILITY. PLEASE REFER TO YOUR SPECIFIED COLOR CHIP OR VIEW A PRODUCT SAMPLE FOR AN ACCURATE REPRESENTATION OF THE ACTUAL COLOR PRIOR TO PURCHASE

South Fork East: Approved Colors Schemes: CALLAWAY POND, CHALK HILL, FLORA SPRINGS,
FLADGATE MARK DR., ASHTON FIELD, GRAHAM YEARDEN DR., RIVERVIEW, FL 33579



SCHEME 3



BODY— 8507 BARELY DAWN

TRIM — 8496 WESTOVER HILLS

COMPUTER MONITORS AND PRINTERS EXHIBIT WIDE RANGES OF COLOR VARIABILITY. PLEASE REFER TO YOUR SPECIFIED COLOR CHIP OR VIEW A PRODUCT SAMPLE FOR AN ACCURATE REPRESENTATION OF THE ACTUAL COLOR PRIOR TO PURCHASE



SCHEME 4



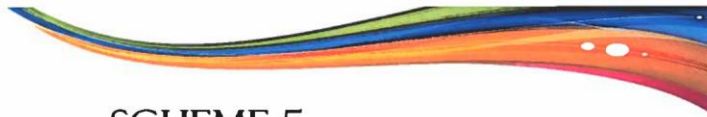
BODY— 8426 DILLARD

TRIM — 7851 PALE PAPYRUS

COMPUTER MONITORS AND PRINTERS EXHIBIT WIDE RANGES OF COLOR VARIABILITY. PLEASE REFER TO YOUR SPECIFIED COLOR CHIP OR VIEW A PRODUCT SAMPLE FOR AN ACCURATE REPRESENTATION OF THE ACTUAL COLOR PRIOR TO PURCHASE

Professionally Managed by FirstService Residential
2870 Scherer Dr N. #100 St. Petersburg, FL 33716 | Tel: 727-299-9555 | Fax: 727-299-9556 |
Email: CFarc@fsresidential.com | www.Fsresidential.com

South Fork East: Approved Colors Schemes: CALLAWAY POND, CHALK HILL, FLORA SPRINGS,
FLADGATE MARK DR., ASHTON FIELD, GRAHAM YEARDEN DR., RIVERVIEW, FL 33579



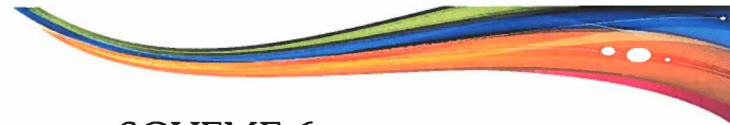
SCHEME 5



BODY— 8538 TIMOTHY TAN

TRIM — 8549 LATTE PLEASE

COMPUTER MONITORS AND PRINTERS EXHIBIT WIDE RANGES OF COLOR VARIABILITY. PLEASE REFER TO YOUR SPECIFIED COLOR CHIP OR VIEW A PRODUCT SAMPLE FOR AN ACCURATE REPRESENTATION OF THE ACTUAL COLOR PRIOR TO PURCHASE



SCHEME 6



BODY— 8329 PUSSY WILLOW

TRIM — 8332 SIBERIAN SNOWFLAKE

COMPUTER MONITORS AND PRINTERS EXHIBIT WIDE RANGES OF COLOR VARIABILITY. PLEASE REFER TO YOUR SPECIFIED COLOR CHIP OR VIEW A PRODUCT SAMPLE FOR AN ACCURATE REPRESENTATION OF THE ACTUAL COLOR PRIOR TO PURCHASE

Professionally Managed by FirstService Residential
2870 Scherer Dr N. #100 St. Petersburg, FL 33716 | Tel: 727-299-9555 | Fax: 727-299-9556 |
Email: CFarc@fsresidential.com | www.Fsresidential.com

South Fork East: Approved Colors Schemes: CALLAWAY POND, CHALK HILL, FLORA SPRINGS,
FLADGATE MARK DR., ASHTON FIELD, GRAHAM YEARDEN DR., RIVERVIEW, FL 33579



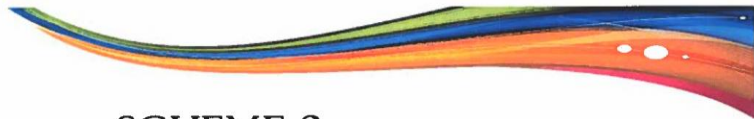
SCHEME 7



BODY— 8435 PEWTER MOON

TRIM — 8436 WHITE DELIGHT

COMPUTER MONITORS AND PRINTERS EXHIBIT WIDE RANGES OF COLOR VARIABILITY. PLEASE REFER TO YOUR SPECIFIED COLOR CHIP OR VIEW A PRODUCT SAMPLE FOR AN ACCURATE REPRESENTATION OF THE ACTUAL COLOR PRIOR TO PURCHASE



SCHEME 8



BODY— 8552 SWISS CREAM

TRIM — WHITE

COMPUTER MONITORS AND PRINTERS EXHIBIT WIDE RANGES OF COLOR VARIABILITY. PLEASE REFER TO YOUR SPECIFIED COLOR CHIP OR VIEW A PRODUCT SAMPLE FOR AN ACCURATE REPRESENTATION OF THE ACTUAL COLOR PRIOR TO PURCHASE

Professionally Managed by FirstService Residential
2870 Scherer Dr N. #100 St. Petersburg, FL 33716 | Tel: 727-299-9555 | Fax: 727-299-9556|
Email: CFarc@fsresidential.com | www.Fsresidential.com

South Fork East: Approved Colors Schemes: CALLAWAY POND, CHALK HILL, FLORA SPRINGS,
FLADGATE MARK DR., ASHTON FIELD, GRAHAM YEARDEN DR., RIVERVIEW, FL 33579



SCHEME 9



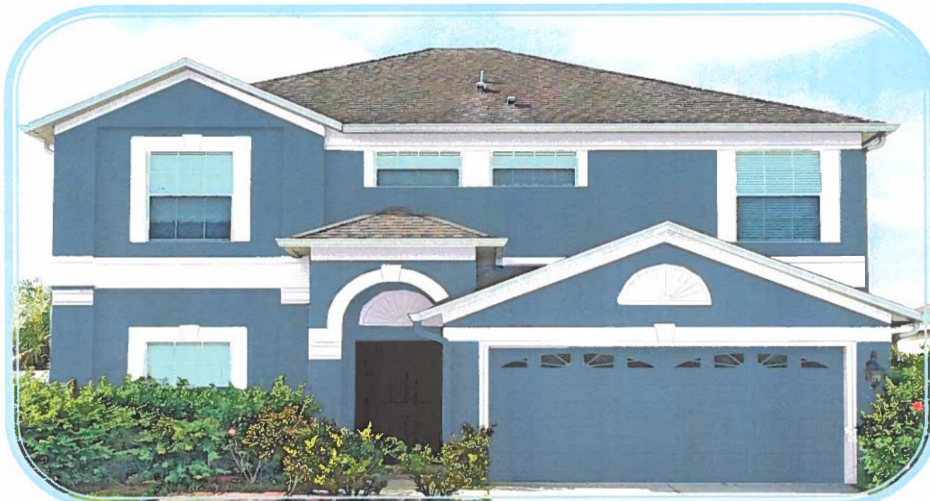
BODY— 8258 WHERE THERE IS SMOKE

TRIM — 8260 MERCURY

COMPUTER MONITORS AND PRINTERS EXHIBIT WIDE RANGES OF COLOR VARIABILITY. PLEASE REFER TO YOUR SPECIFIED COLOR CHIP OR VIEW A PRODUCT SAMPLE FOR AN ACCURATE REPRESENTATION OF THE ACTUAL COLOR PRIOR TO PURCHASE



SCHEME 10



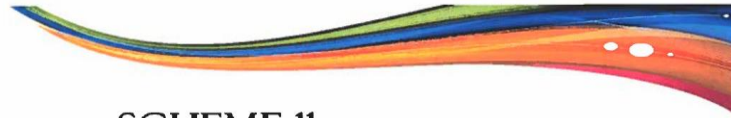
BODY— 8265 BROOKVIEW

TRIM — WHITE

COMPUTER MONITORS AND PRINTERS EXHIBIT WIDE RANGES OF COLOR VARIABILITY. PLEASE REFER TO YOUR SPECIFIED COLOR CHIP OR VIEW A PRODUCT SAMPLE FOR AN ACCURATE REPRESENTATION OF THE ACTUAL COLOR PRIOR TO PURCHASE

Professionally Managed by FirstService Residential
2870 Scherer Dr N. #100 St. Petersburg, FL 33716 | Tel: 727-299-9555 | Fax: 727-299-9556 |
Email: CFarc@fsresidential.com | www.Fsresidential.com

South Fork East: Approved Colors Schemes: CALLAWAY POND, CHALK HILL, FLORA SPRINGS,
FLADGATE MARK DR., ASHTON FIELD, GRAHAM YEARDEN DR., RIVERVIEW, FL 33579



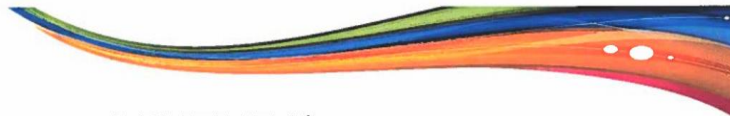
SCHEME 11



BODY— 8551 POCAHONTAS

TRIM — 8556 WHISPER OF WHITE

COMPUTER MONITORS AND PRINTERS EXHIBIT WIDE RANGES OF COLOR VARIABILITY. PLEASE REFER TO YOUR SPECIFIED COLOR CHIP OR VIEW A PRODUCT SAMPLE FOR AN ACCURATE REPRESENTATION OF THE ACTUAL COLOR PRIOR TO PURCHASE



SCHEME 12



BODY— 8554 HERITAGE HILLS

TRIM — WHITE

COMPUTER MONITORS AND PRINTERS EXHIBIT WIDE RANGES OF COLOR VARIABILITY. PLEASE REFER TO YOUR SPECIFIED COLOR CHIP OR VIEW A PRODUCT SAMPLE FOR AN ACCURATE REPRESENTATION OF THE ACTUAL COLOR PRIOR TO PURCHASE

Professionally Managed by FirstService Residential
2870 Scherer Dr N. #100 St. Petersburg, FL 33716 | Tel: 727-299-9555 | Fax: 727-299-9556 |
Email: CFarc@fsresidential.com | www.Fsresidential.com

South Fork East: Approved Colors Schemes: CALLAWAY POND, CHALK HILL, FLORA SPRINGS,
FLADGATE MARK DR., ASHTON FIELD, GRAHAM YEARDEN DR., RIVERVIEW, FL 33579



SCHEME 13



BODY— 7891 FRENCH SONNET

TRIM — WHITE

COMPUTER MONITORS AND PRINTERS EXHIBIT WIDE RANGES OF COLOR VARIABILITY. PLEASE REFER TO YOUR SPECIFIED COLOR CHIP OR VIEW A PRODUCT SAMPLE FOR AN ACCURATE REPRESENTATION OF THE ACTUAL COLOR PRIOR TO PURCHASE



SCHEME 14



BODY— 8471 GREYSWOOD

TRIM — 8476 WHITE NOW!

COMPUTER MONITORS AND PRINTERS EXHIBIT WIDE RANGES OF COLOR VARIABILITY. PLEASE REFER TO YOUR SPECIFIED COLOR CHIP OR VIEW A PRODUCT SAMPLE FOR AN ACCURATE REPRESENTATION OF THE ACTUAL COLOR PRIOR TO PURCHASE

Professionally Managed by FirstService Residential
2870 Scherer Dr N. #100 St. Petersburg, FL 33716 | Tel: 727-299-9555 | Fax: 727-299-9556 |
Email: CFarc@fsresidential.com | www.Fsresidential.com

South Fork East: Approved Colors Schemes: CALLAWAY POND, CHALK HILL, FLORA SPRINGS,
FLADGATE MARK DR., ASHTON FIELD, GRAHAM YEARDEN DR., RIVERVIEW, FL 33579



SCHEME 15



BODY— 8480 HEAD FOR THE BEACH

TRIM — 8484 PALE FACE

COMPUTER MONITORS AND PRINTERS EXHIBIT WIDE RANGES OF COLOR VARIABILITY. PLEASE REFER TO YOUR SPECIFIED COLOR CHIP OR VIEW A PRODUCT SAMPLE FOR AN ACCURATE REPRESENTATION OF THE ACTUAL COLOR PRIOR TO PURCHASE



SCHEME 16



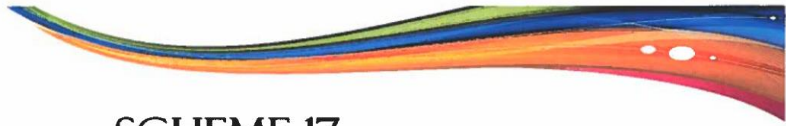
BODY— 8256 MADISON GREY

TRIM — 8524 CLOUD OF CREAM

COMPUTER MONITORS AND PRINTERS EXHIBIT WIDE RANGES OF COLOR VARIABILITY. PLEASE REFER TO YOUR SPECIFIED COLOR CHIP OR VIEW A PRODUCT SAMPLE FOR AN ACCURATE REPRESENTATION OF THE ACTUAL COLOR PRIOR TO PURCHASE

Professionally Managed by FirstService Residential
2870 Scherer Dr N. #100 St. Petersburg, FL 33716 | Tel: 727-299-9555 | Fax: 727-299-9556 |
Email: CFarc@fsresidential.com | www.Fsresidential.com

South Fork East: Approved Colors Schemes: CALLAWAY POND, CHALK HILL, FLORA SPRINGS,
FLADGATE MARK DR., ASHTON FIELD, GRAHAM YEARDEN DR., RIVERVIEW, FL 33579



SCHEME 17



BODY— 8459 TRAVERTINE TRAIL

TRIM — 8551 POCAHONTAS

COMPUTER MONITORS AND PRINTERS EXHIBIT WIDE RANGES OF COLOR VARIABILITY. PLEASE REFER TO YOUR SPECIFIED COLOR CHIP OR VIEW A PRODUCT SAMPLE FOR AN ACCURATE REPRESENTATION OF THE ACTUAL COLOR PRIOR TO PURCHASE



SCHEME 18



BODY— 8529 STAR IN THE GARDEN

TRIM — 8526 MEXICAN HILLS

COMPUTER MONITORS AND PRINTERS EXHIBIT WIDE RANGES OF COLOR VARIABILITY. PLEASE REFER TO YOUR SPECIFIED COLOR CHIP OR VIEW A PRODUCT SAMPLE FOR AN ACCURATE REPRESENTATION OF THE ACTUAL COLOR PRIOR TO PURCHASE

Professionally Managed by FirstService Residential
2870 Scherer Dr N. #100 St. Petersburg, FL 33716 | Tel: 727-299-9555 | Fax: 727-299-9556 |
Email: CFarc@fsresidential.com | www.Fsresidential.com

South Fork East: Approved Colors Schemes: CALLAWAY POND, CHALK HILL, FLORA SPRINGS,
FLADGATE MARK DR., ASHTON FIELD, GRAHAM YEARDEN DR., RIVERVIEW, FL 33579



SCHEME 19



BODY— 8536 BERNARD BEACH

TRIM — 8454 CRÈME DE CAMEL

COMPUTER MONITORS AND PRINTERS EXHIBIT WIDE RANGES OF COLOR VARIABILITY. PLEASE REFER TO YOUR SPECIFIED COLOR CHIP OR VIEW A PRODUCT SAMPLE FOR AN ACCURATE REPRESENTATION OF THE ACTUAL COLOR PRIOR TO PURCHASE



SCHEME 20



BODY— 8551 POCAHONTAS

TRIM — OW156 ALMOST IVORY

COMPUTER MONITORS AND PRINTERS EXHIBIT WIDE RANGES OF COLOR VARIABILITY. PLEASE REFER TO YOUR SPECIFIED COLOR CHIP OR VIEW A PRODUCT SAMPLE FOR AN ACCURATE REPRESENTATION OF THE ACTUAL COLOR PRIOR TO PURCHASE

Professionally Managed by FirstService Residential
2870 Scherer Dr N. #100 St. Petersburg, FL 33716 | Tel: 727-299-9555 | Fax: 727-299-9556 |
Email: CFarc@fsresidential.com | www.Fsresidential.com

South Fork East: Approved Colors Schemes: CALLAWAY POND, CHALK HILL, FLORA SPRINGS,
FLADGATE MARK DR., ASHTON FIELD, GRAHAM YEARDEN DR., RIVERVIEW, FL 33579

BRADENTON EAST (941) 751-4911
6713 East State Road 70 • Bradenton, FL 34203
One mile west of I-75

BRADENTON WEST (941) 795-2222
5203 Cortez Road West • Bradenton, FL 34210
Across from Checkers and Oil Can Henry's

BRANDON (813) 689-6229
505 W. Brandon Blvd. • Brandon, FL 33511
In Clayton Plaza across from McDonald's

BROOKSVILLE (352) 796-1777
1248 S. Broad St. • Brooksville, FL 34601
NW corner of U.S. 41 and State Road 50

CLEARWATER (727) 461-0511
712 S. Missouri Avenue • Clearwater, FL 33756
One block south of Court Street

COUNTRYSIDE (727) 725-7707
28788 US Highway 19 N • Clearwater, FL 33761
One mile north of Countryside Mall on U.S. 19

FORT MYERS (239) 278-4101
11751 Metro Parkway • Fort Myers, FL 33912
1/2 mile north of Crystal on Metro Parkway

HUDSON (727) 868-9417
9110 State Road 52 • Hudson, FL 34667
On State Road 52 one block east of Little Road

LAKELAND (863) 802-5357
1737 E. Edgewood Drive • Lakeland, FL 33803
In Lake Bentley Plaza across from The Gun Shed

NAPLES (239) 732-6664
1201 Airport Pulling Road • Naples, FL 34104
At Airport Pulling Road and Estey Avenue

ST. PETERSBURG (727) 322-1452
2601 22nd Avenue N • St. Petersburg, FL 33713
1/4 mile west of I-275



SARASOTA NORTH (941) 351-3443
4034 N. Washington Blvd. • Sarasota, FL 34234
One block north of Myrtle

SARASOTA SOUTH (941) 922-3305
2444 Stickney Point Road • Sarasota, FL 34231
1/4 mile east of U.S. 41

SARASOTA EAST (941) 379-6428
7839 Fruitville Road • Sarasota, FL 34240
2 miles east of I-75

TAMPA (813) 933-1728
3712 W. Waters Avenue • Tampa, FL 33614
One block east of Dale Mabry

VENICE (941) 493-8219
1833 S. Tamiami Trail • Venice, FL 34293
1/4 mile south of Shamrock Boulevard

WESLEY CHAPEL (813) 907-5393
26607 State Road 54 • Lutz, FL 33559
1-1/2 miles west of I-75 on State Road 54



**Florida's Best Paint
Since 1965**

www.scottpaint.com

7/14